

校舎配置図

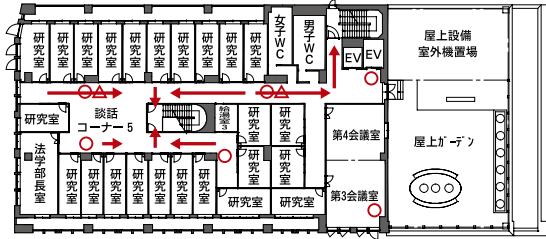
◆静岡水落キャンパス

■ 常葉中・高等学校

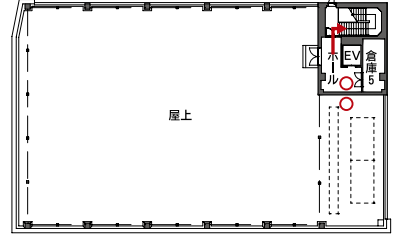
本館平面図

- 消火器
- △ 消火栓
- ← 避難経路

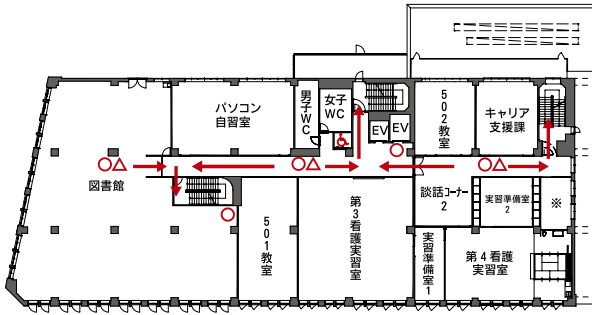
7階



8階

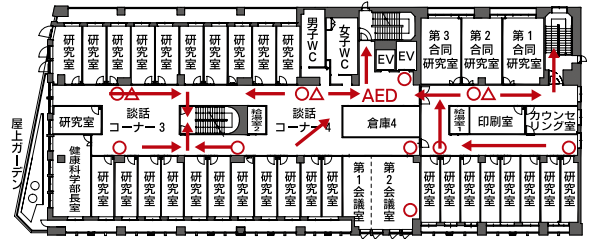


5階

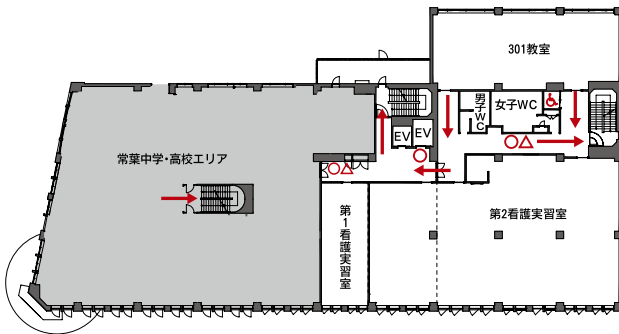


※キャリア支援課(公務員対策)/地域貢献課

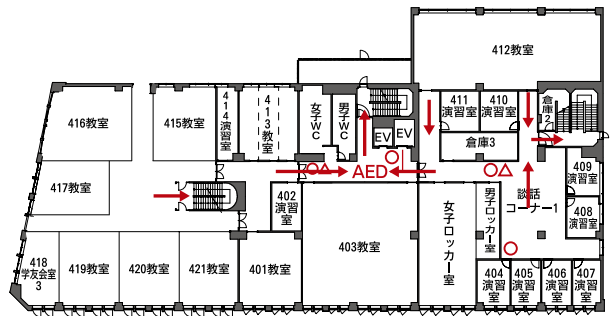
6階



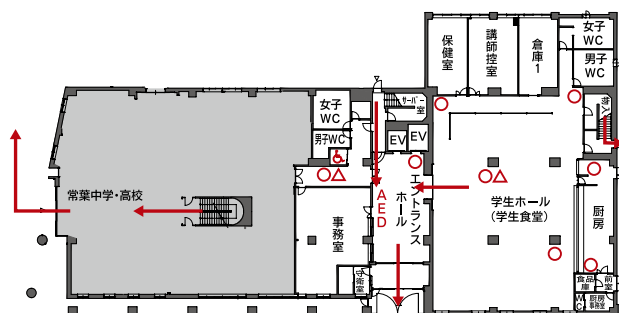
3階



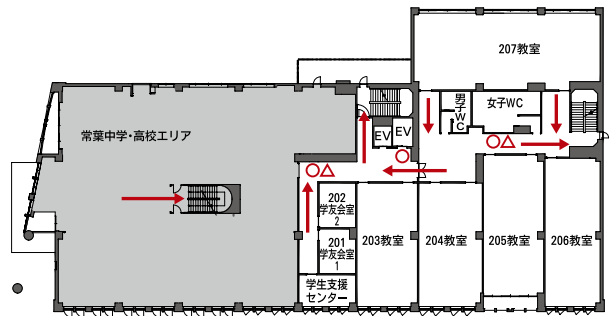
4階



1階



2階

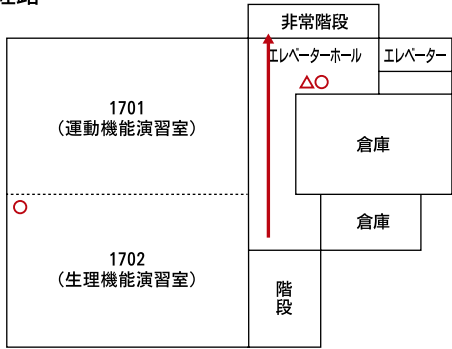


◆ 静岡水落キャンパス 1号館

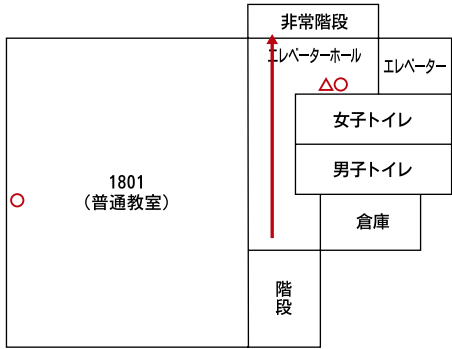
1号館平面図

- 消火器
- △ 消火栓
- ← 避難経路

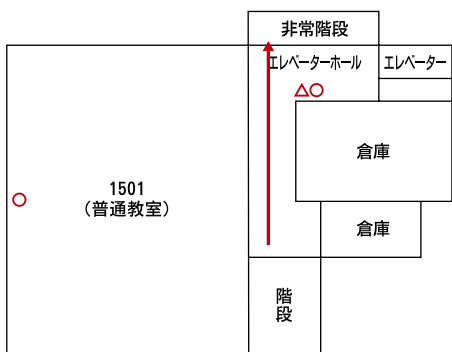
7階



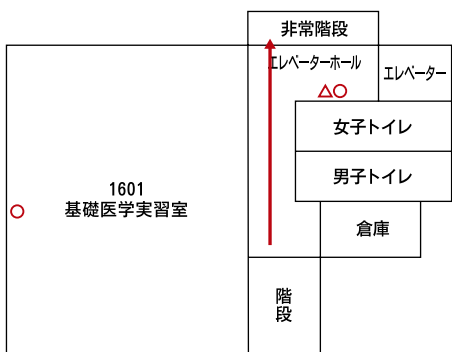
8階



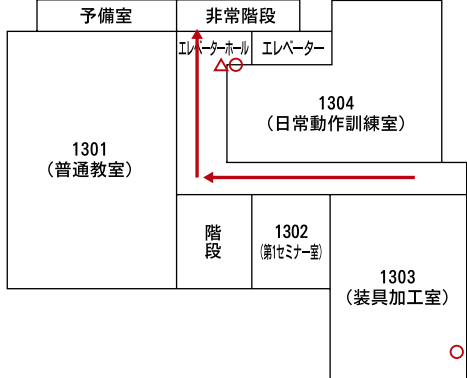
5階



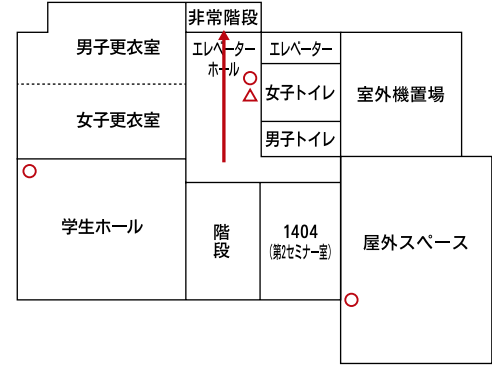
6階



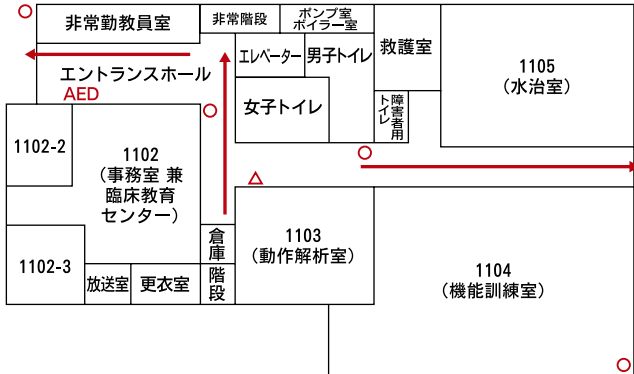
3階



4階



1階



2階

